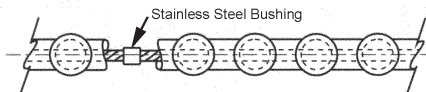
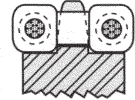
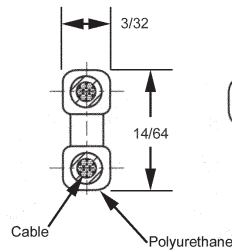
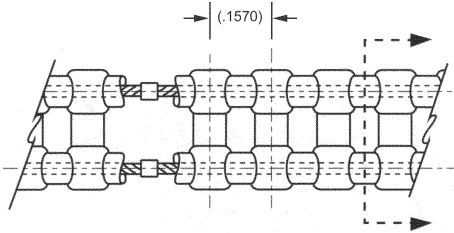


# CABLE CHAINS

PITCH	CIRCULAR PITCH	MATERIALS	BERG'S ® NAME	SPROCKET
<b>1/20</b>	<b>.1570</b>	Polyurethane (Red) 1/32" Dia. Stainless Steel Cable*	<b>Min-E-Pitch®</b>	Operates with 3CC, 3MP, 3MF and 3MC series.



STOCK NO.	NO. OF PITCHES	LENGTH (Ref.)
3CCF-30-E	30	4.712
3CCF-35-E	35	5.498
3CCF-40-E	40	6.283
3CCF-45-E	45	7.069
3CCF-50-E	50	7.854
3CCF-55-E	55	8.639
3CCF-60-E	60	9.425
3CCF-70-E	70	10.996
3CCF-80-E	80	12.566
3CCF-90-E	90	14.137
3CCF-100-E	100	15.708
3CCF-110-E	110	17.279
3CCF-120-E	120	18.850
3CCF-130-E	130	20.420
3CCF-140-E	140	21.991
3CCF-150-E	150	23.562
3CCF-160-E	160	25.133
3CCF-170-E	170	26.704
3CCF-180-E	180	28.274
3CCF-190-E	190	29.845
3CCF-200-E	200	31.416
3CCF-210-E	210	32.987
3CCF-220-E	220	34.558
3CCF-230-E	230	36.128
3CCF-240-E	240	37.699
3CCF-250-E	250	39.270
3CCF-260-E	260	40.840
3CCF-270-E	270	42.412
3CCF-280-E	280	43.982
3CCF-290-E	290	45.553
3CCF-300-E	300	47.124
3CCF-310-E	310	48.695
3CCF-320-E	320	50.265
3CCF-330-E	330	51.836
3CCF-340-E	340	53.407
3CCF-350-E	350	54.978
3CCF-370-E	370	58.119
3CCF-400-E	400	62.832
3CCF-440-E	440	69.115

- For Field Splice Kit order 3CCR-7.
- \* Available with Aramid Core. See page VII for alternative belt construction or reverse bending applications.
- \*\* Reduce Operating Load Rating by 50% for field splices.
- Infinite Lengths
- Silent Drive
- Weight .13 oz./ft.
- Non-Magnetic
- Positive Drive
- Zero Backlash
- No Lubrication
- 90A Durometer
- Ultimate Tensile Strength 100 lbs., 20 lbs./Pin when belt is used in open loop configuration (without splice, no crimp bushings).
- Temperature Range +180°F to -15°F
- Recommended Operating Load 25 lbs.
- Recommended Max. Operating Speed 376 Feet/Min.
- Other numbers of pitches available on request.

BULK FOOTAGE - NOT SPLICED	
STOCK NO.	LENGTH
3CCF-5FT	5 FT
3CCF-10FT	10 FT
3CCF-25FT	25 FT
3CCF-50FT	50 FT
3CCF-100FT	100 FT

